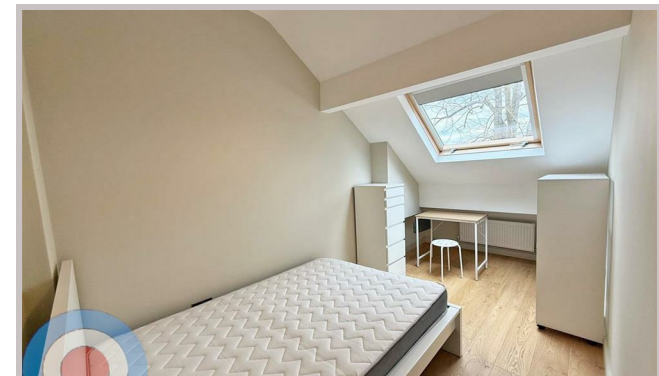




19 Mauldeth Road
West
Withington
M20 3EQ



19 Mauldeth Road West

£775 Per month

9-Bedroom, 2-Bathroom Student House Just Off Wilmslow Road – Bills Included

This cool 9-bedroom house is perfectly located just off Wilmslow Road, between Fallowfield and Withington, with buses to the city and university just 2 minutes away.

The open-plan kitchen-diner features a peninsula island, dining table with benches, and overlooks the rear garden. The sleek modern kitchen boasts quartz countertops. There are two bathrooms, including a top-floor bathroom with a modern freestanding bathtub, green terrazzo tiles, and timber-clad walls.

All nine bedrooms are doubles, with lots of original features and high ceilings throughout, creating a stylish and spacious home for students.

No deposit required, with all bills included and communal cleaning provided throughout the tenancy.

£775.67 pppm

£179 pppw

- NO DEPOSIT
- COMMUNAL CLEANING INCLUDED
- ALL DOUBLE BEDROOMS
- ENERGY EFFICIENT HOUSE C OR ABOVE
- GREAT LOCATION FOR STUDENTS

Local Authority
Manchester City Council

Council Tax Band Exempt

EPC Rating D

Contact

01613992619

hello@welcometomanchesterlettings.com

www.welcometomanchesterlettings.com

